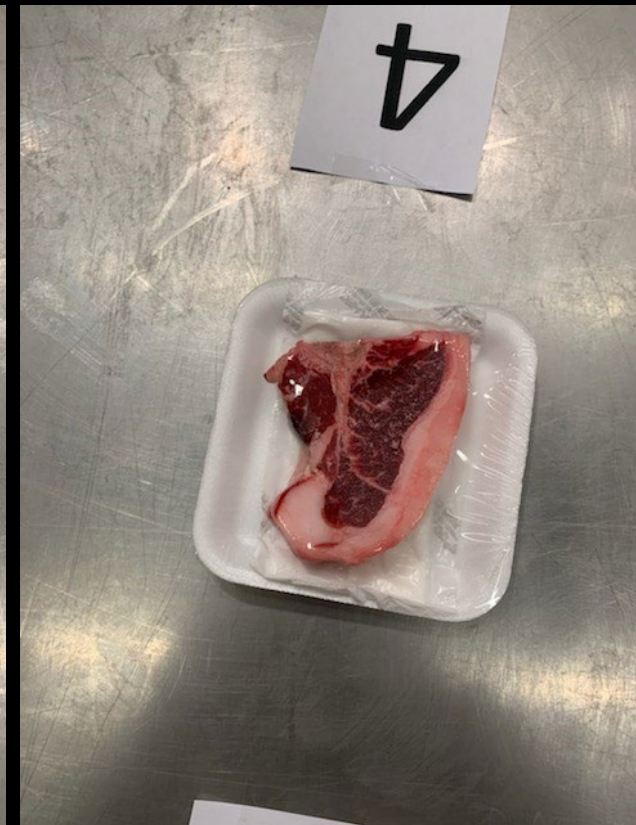
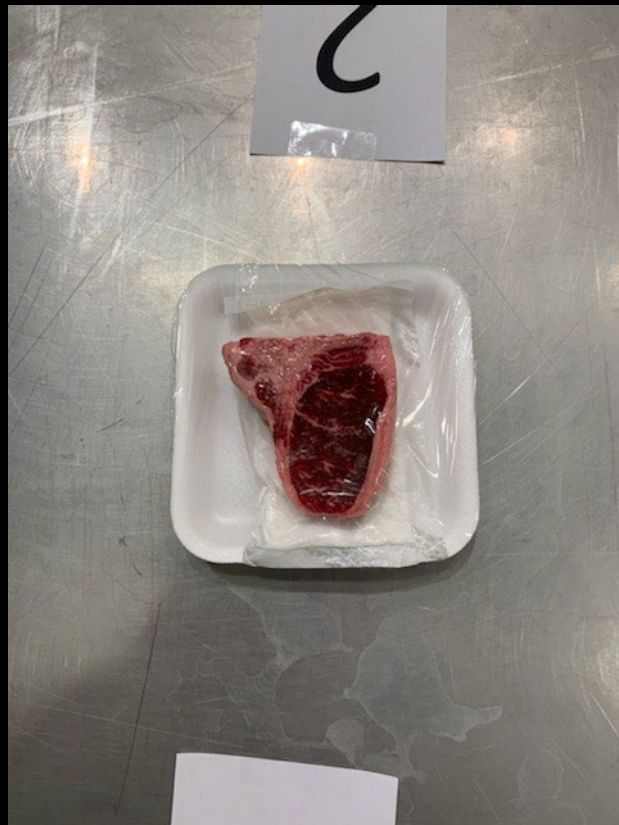


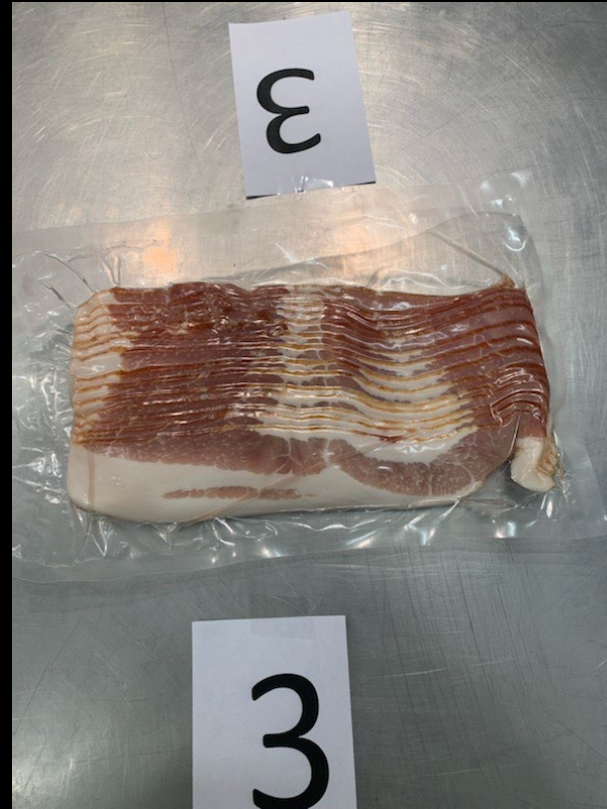
Class 1: Lamb Chops



Placing: 3-2-1-4

Cuts: 3-3-4

Class 2: Sliced Bacon



Placing: 4-1-2-3

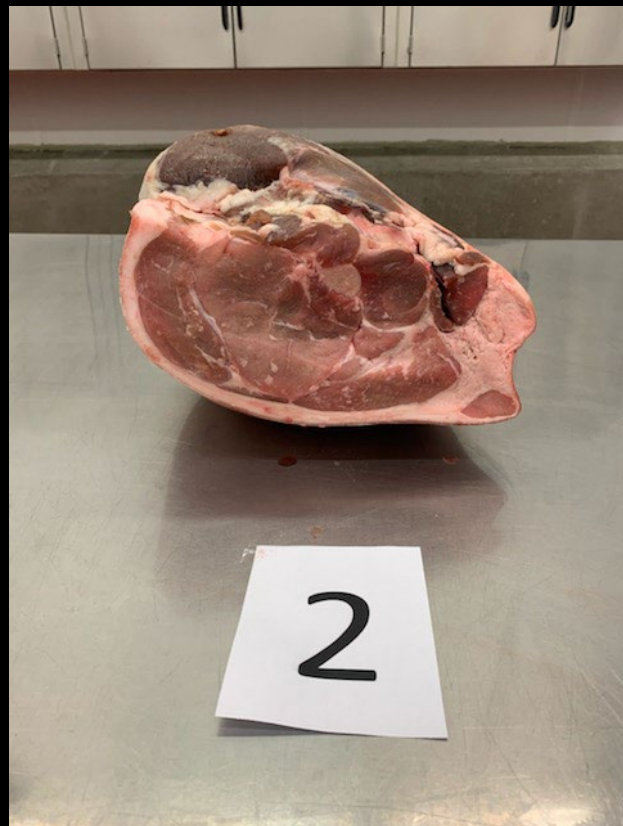
Cuts: 2-3-3

Class 3: Beef T-Bones and Porterhouses



Placing: 4-1-3-2
Cuts: 1-2-3

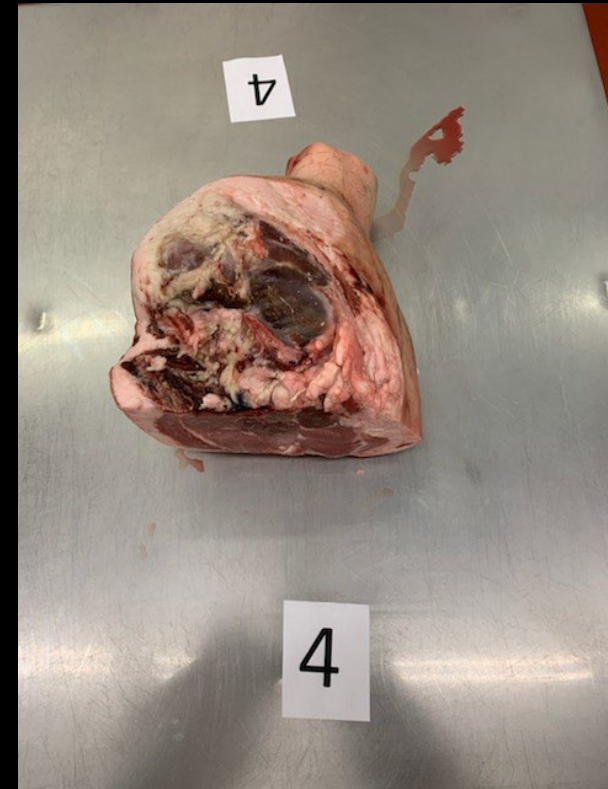
Class 4: Hams



Placing: 2-1-4-3

Cuts: 3-3-4

Class 4: Hams



Placing: 2-1-4-3

Cuts: 3-3-4

Class 5: Beef Ribs



Placing: 3-4-2-1

Cuts: 4-3-4

Class 5: Beef Ribs



Placing: 3-4-2-1
Cuts: 4-3-4



Pork, Side, Sliced Bacon



Beef, Round, Bottom Round Steak



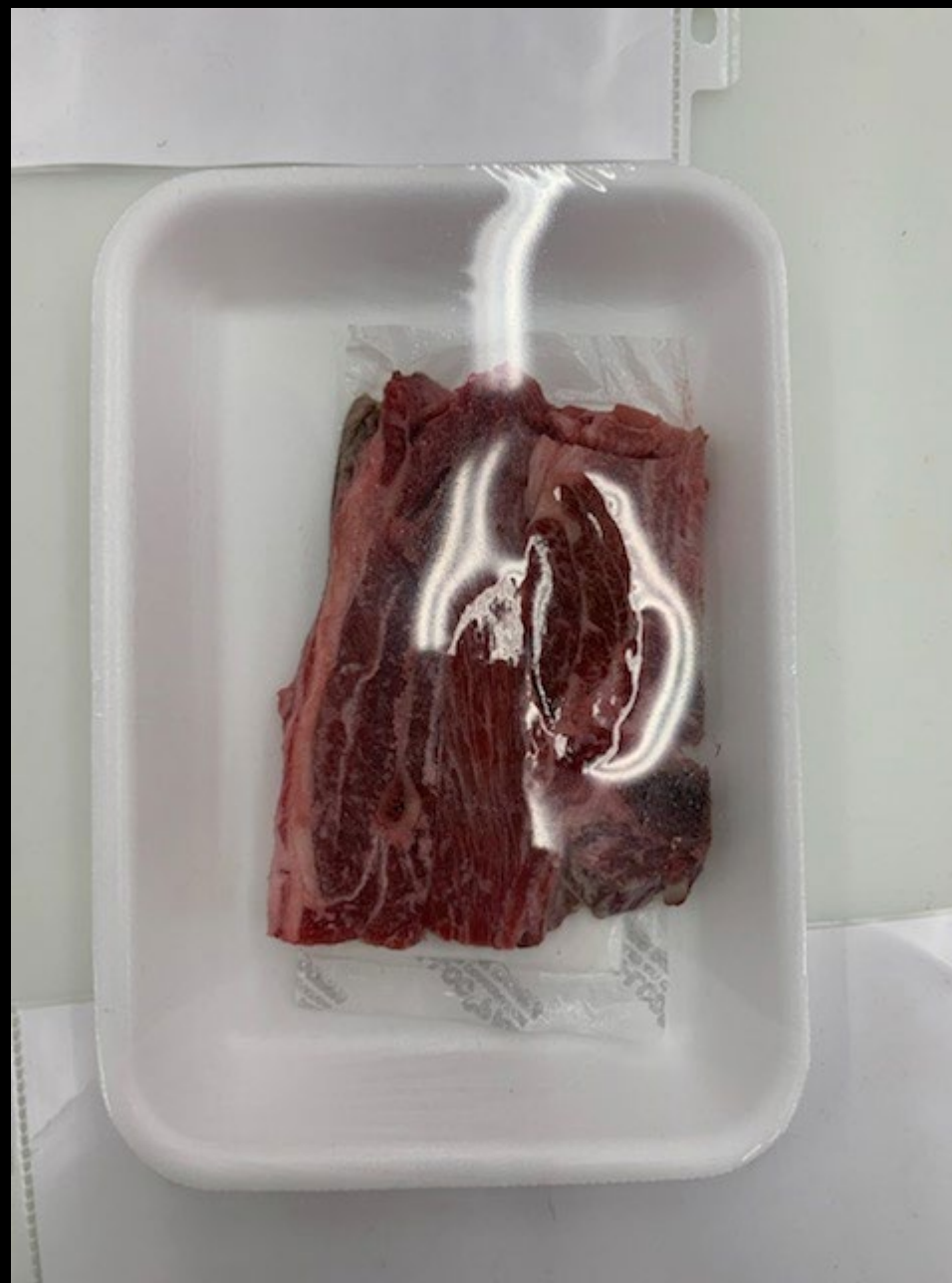
Lamb, Various, Shank



Pork, Loin, Blade Chops



Beef, Plate, Skirt Steak



Lamb, Shoulder, Blade Chops



Pork, Loin, Loin Chops



Lamb, Rib, Rib Chops



Beef, Rib, Ribeye Steak, Bnls



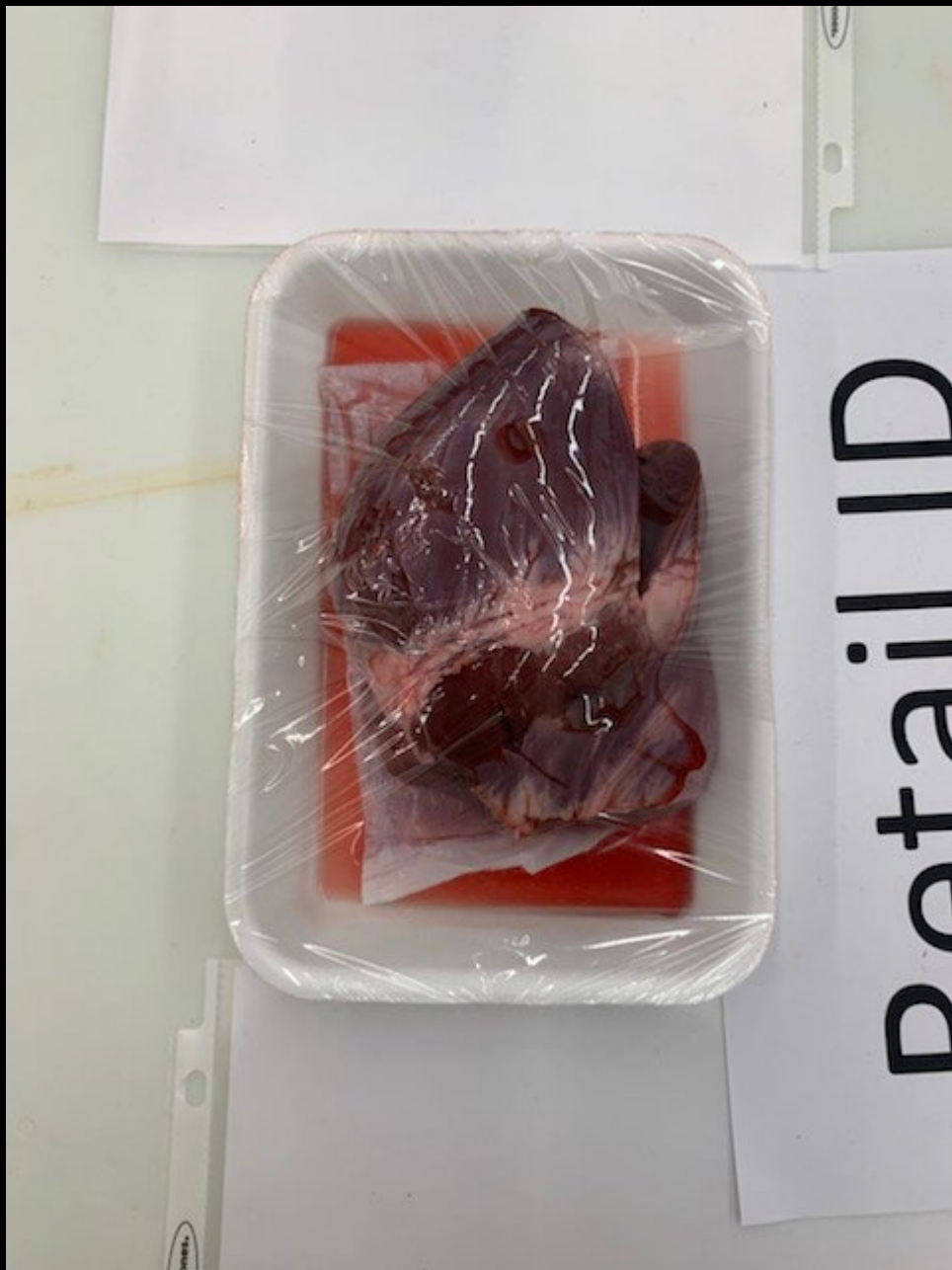
Pork, Loin, Sirloin Cutlets



Pork, Various, Hock



Pork, Various, Spareribs



Pork, Variety, Heart



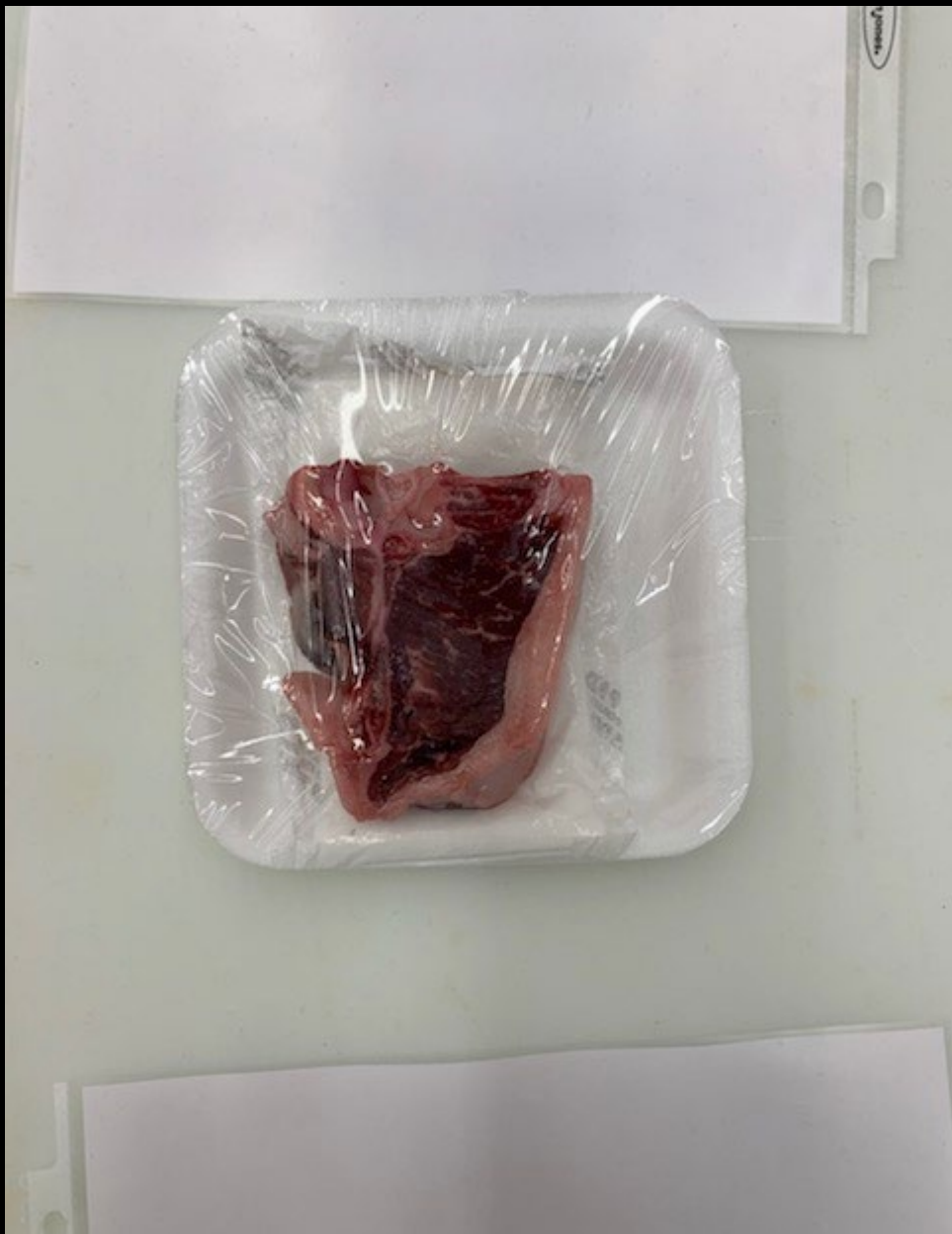
Beef, Chuck, Flat Iron



Pork, Loin, Rib Chops



Beef, Loin, Top Sirloin Steak, Bnl



Lamb, Loin, Loin Chop



Pork, Ham, Smoked Boneless



Lamb, Shoulder, Square Cut



Pork, Loin, Tenderloin, Whole



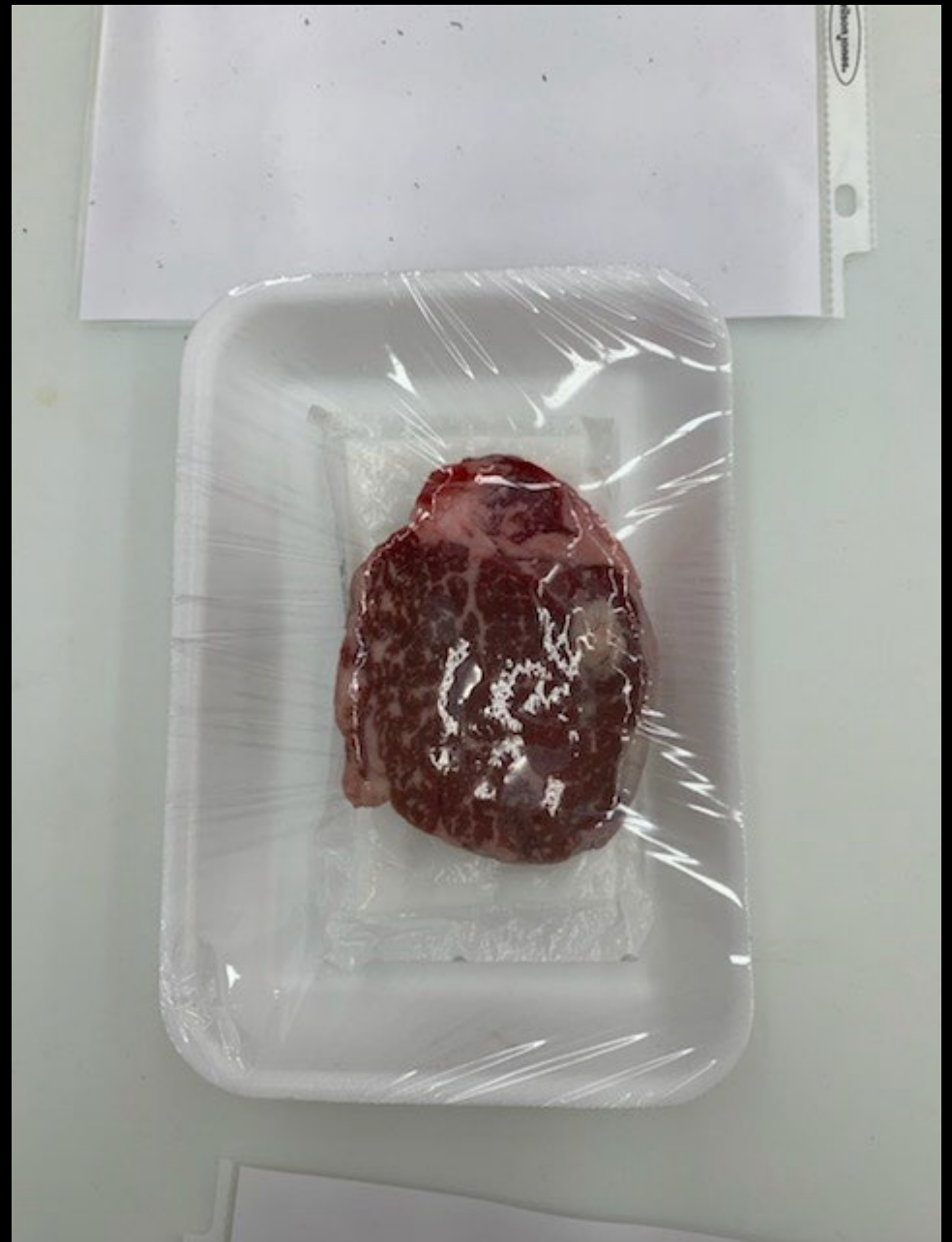
Lamb, Variety, Kidney



Beef, Flank, Flank Steak



Pork, Loin, Backribs



Beef, Loin, Tenderloin steak



Pork, Loin, Top Loin Roast, Bnls



Pork, Loin, Top Loin Chops, Bnls



Pork, Shoulder, Blade Boston Roast



Lamb, Rib, Rib Roast



Beef, Various, Stew Meat



Beef, Brisket, Whole, Bnls